

HC5 miniBOOSTER



HC5: 11

P_{IN} : 20 - 200 ()

P_H : 800 ()

P_{RETURN} () ; ()

$$: P_H = (P_{IN} - P_{RETURN}) i ()$$

:

:

HC5

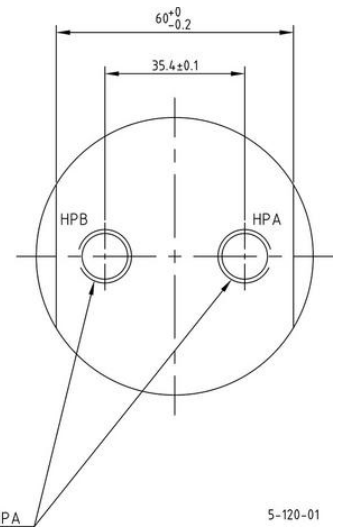
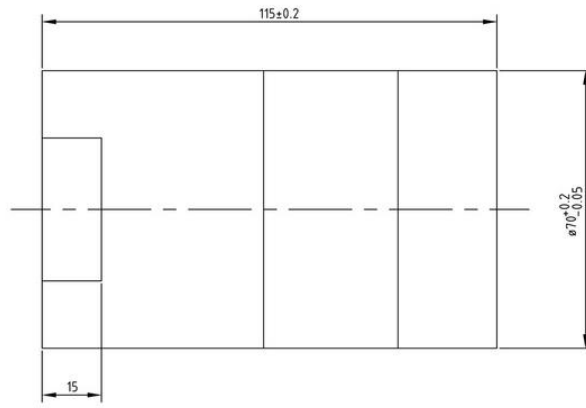
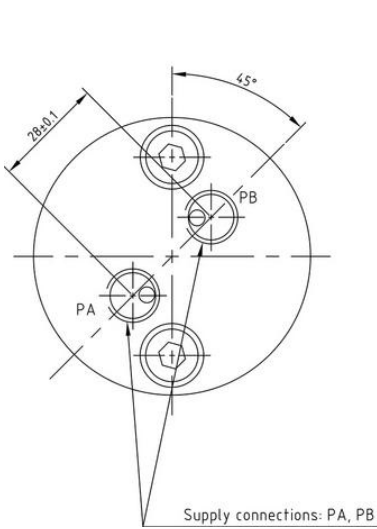
miniBOOSTER

CV

HC2, HC5

3,0

i	i	i
1,2	1,2	8,0
1,5	1,0	8,0
2,0	2,0	12,0
2,8	2,2	13,0
3,2	2,5	15,0
4,0	2,0	14,0
5,0	1,6	14,0
6,6	1,3	13,0
9,0	0,9	13,0
13,0	0,6	12,0
20,0	0,3	12,0



5-120-01

IN,

KV1, KV2 DV

H.

CV

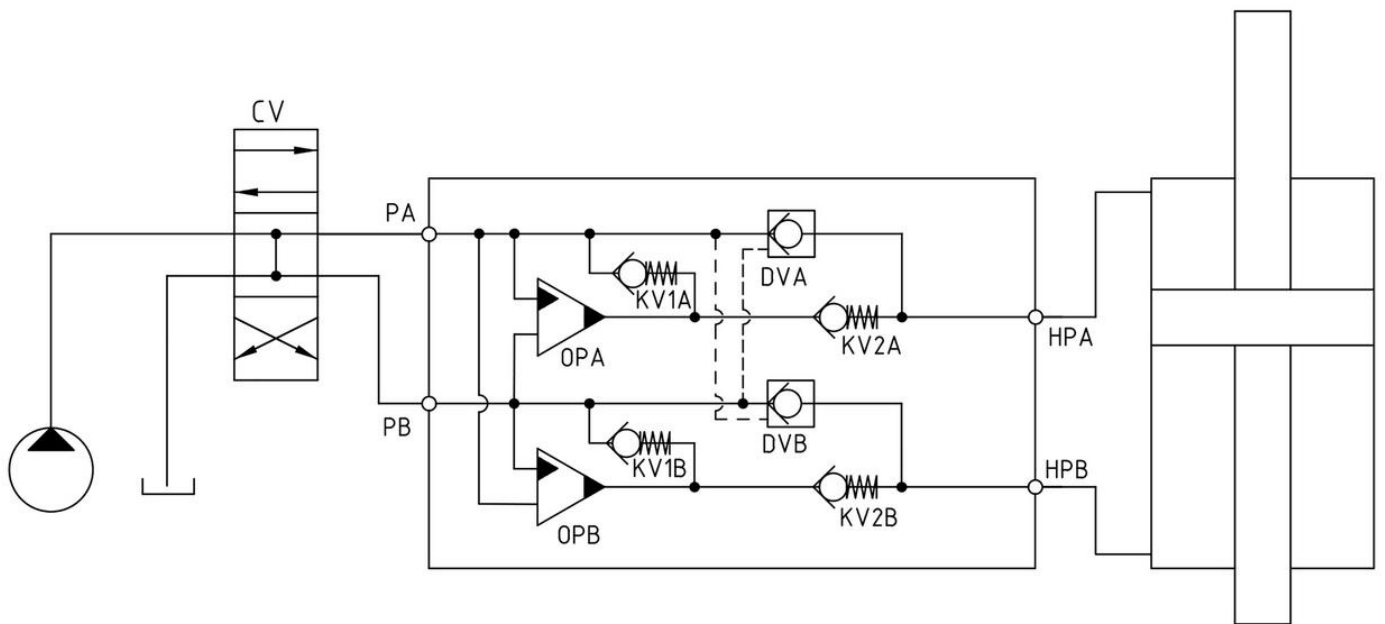
OP.

H,

KV1, KV2 DV

H.

OP.



5-105-02

	IN / R	H
1	1/4" BSPP	1/4" BSPP
2	7/16-18 UNF	9/16-18 UNF

BSPP

	IN / R	H
	1/4" BSPP	1/4" BSPP
	4,0 10/	4,0 10/
	3,0 10/	-
	4,0 10/	4,0 10/

TTNF

	IN / R	H
	7/16-18" UNF	9/16-18" UNF
	2,0 10/	3,5 10/

HC5

HC5

iA = 4,0 iB = 5,0,

BSPP: HC5 - 4,0 - 5.0 - 1

	, i	, i	
HC5
			1
			2